

THE
CLYDE & CO
ART AWARD
SUPPORTING THE NEXT GENERATION

ART

AWARD

2018 - 2019

S U P P O R T I N G
T H E N E X T
G E N E R A T I O N



CLYDE & CO SAN FRANCISCO IS PROUD TO BE A PART OF THE FIRM’S GLOBAL ART INITIATIVE, WHICH HAS ENABLED THE OFFICE TO SHOWCASE ART FROM LOCAL STUDENTS AS THEY COMMENCE THEIR CAREERS. THE PROGRAM IN SAN FRANCISCO IS IN ITS FIFTH YEAR AND HAS DOUBLED IN SIZE SINCE ITS INCEPTION TO INCLUDE OVER FORTY PIECES. THE FEEDBACK FROM THE ARTISTS, THE LOCAL SCHOOLS AND CLIENTS HAS BEEN EXTREMELY POSITIVE, AND THE ATTORNEYS AND STAFF LOVE BEING A PART OF THE CREATIVE LOCAL COMMUNITY.

JOAN D’AMBROSIO PARTNER, SAN FRANCISCO

  @artclydeco

M O R E I N F O R M A T I O N

Please refer to our website www.artawards.clydeco.com for more information about this project, to view the current collection and to read about some of our participating artists who have taken part in the Clyde & Co Art Award program.



C O N T E N T S

WELCOME	4
AROUND THE WORLD	5
PRIZE AND SALE	6
LAST YEAR’S WINNERS	7
2018 - 2019 COLLECTION	9
ACKNOWLEDGEMENTS	33



WELCOME TO THE ART AWARD

This Art Award forms part of our global corporate responsibility program, Clyde & Community, which supports local communities, charities and organizations with practical help from our staff and financial donations.

Inspired by the success of the London office's Art Awards, this initiative aims to encourage and nurture the talent of collegiate art students based in the San Francisco Bay Area by showcasing their work as they graduate from three leading art schools (California College of the Arts, Academy of Art University, and San Francisco Art Institute).



Clyde & Co London



AROUND THE WORLD

This project is part of an expanding partnership between Clyde's offices around the world and local art schools, all of which share similar aims and principles.

The Clyde & Co Art Award has been replicated in many of our offices including London, the Middle East, Australia and Singapore. The London office launched their program in 2012, the Middle East in 2013, and Australia and Singapore in 2014. While each project is tailored to its specific region, the fundamental ideals of the projects are the same around the world.

P R I Z E
A N D
S A L E

The project seeks to support the young artist’s transition from art school to the commercial art world, serving as a stepping stone to a professional career in art.

By giving students the opportunity to enter into dialogue with the corporate community, the initiative provides a window into a world beyond art school – that of the practicing artist.

Selected works of students from the Academy of Art University, San Francisco Art Institute and California College of the Arts are displayed in the public areas of the San Francisco office, and will remain up for one year.

SUPPORT FOR
EACH STUDENT

Each participating artist whose work is selected receives an honorarium, pro bono legal support, and business mentoring during the year their art is displayed at Clyde. They also are eligible for the Clyde & Co Art Prize and the Office Vote Award.

One work is awarded the Clyde & Co Art Prize of \$5,000 by a panel of distinguished judges from the community. A second work is awarded a prize of \$2,500 as the winner of the Office Vote Award.

YOU CAN PURCHASE
THE WORK

Hoping to support the students as much as possible, the firm facilitates the sale of their current works throughout the year. The students receive the full value of the sale of their works. Any unsold work is returned to them.

Should you desire to purchase one of the current pieces, please email sfprojectart@clydeco.us

L A S T
Y E A R ' S
W I N N E R S



LEX CALIP

Clyde & Community Art Award

Tension no 8

Graphite on paper / 42 x 60 inches



TOM COLCORD

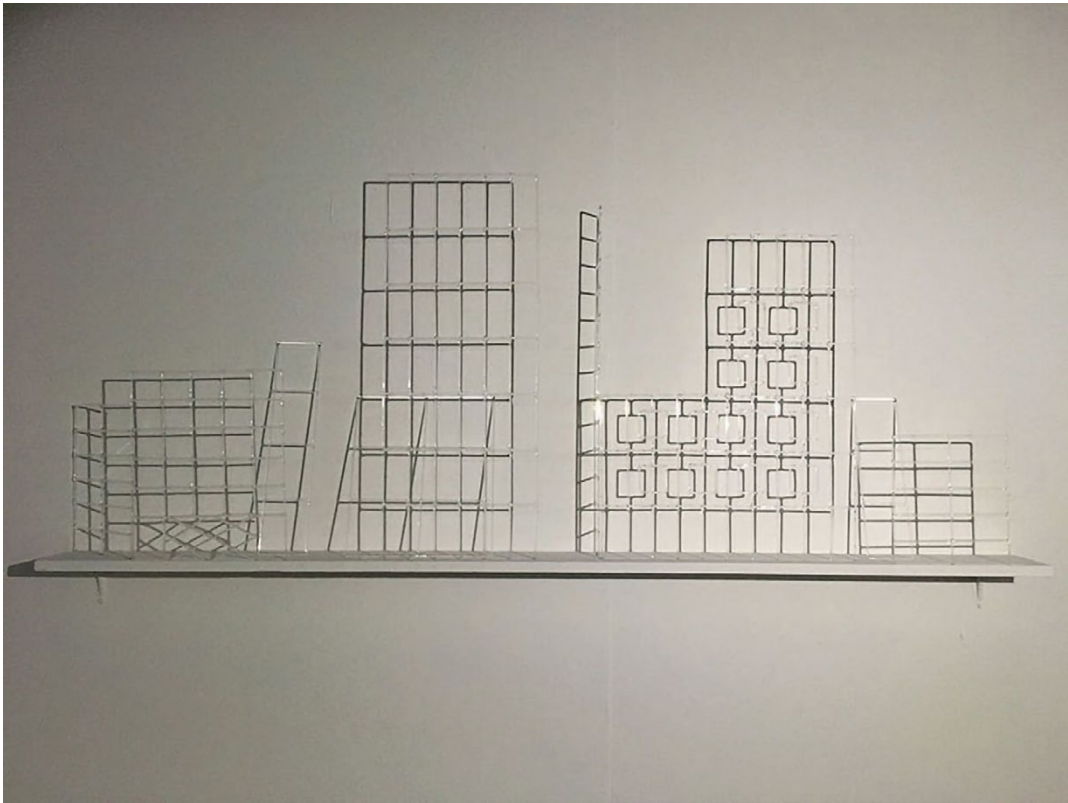
San Francisco Office Vote Award

Quiet as a Mouse

Acrylic on canvas / 72 x 72 inches

THIS
YEAR'S
COLLECTION
2018 -
2019





NAJAH ALBOUSHI

CCA

Wishful Thinking - 2017

Glass and wood / 24 x 72 x 8 inches
\$700

Wishful Thinking explores our definitions of home that are revealed through dreams and desires of comfort and security.



Clouds - 2017

Oil on wood panel / 19 x 24 inches
\$700



Sunset - 2017

Oil on canvas / 22 x 28 inches
\$700

JEFF MCWILLIAMS

www.jeffmcwilliamsart.com
AAU

My landscapes enclose the grandeur of nature within the boundaries of my brushstrokes. I capture an event that I experienced and recreate it so that others may witness what I saw. What I feel is too intangible to put into words. Instead, I express my emotions with strokes of paint.



Bay - 2017

Oil on wood panel / 32 x 15 inches
\$900

JAKE SCHEMPF
www.jakeschempf.com
SFAI

I renew energy by abstractly recycling disregarded and salvaged materials. Breaking up structured art serves to break the structure that shackles us to a system wound tight within our culture. Fluid motion, layers of dripping paint and glazing allow me to create work that inspires the imagination to see beyond.



Deconstructed Waves - 2017

Acrylic on canvas / 48 x 36 inches
\$1,000



Deconstructed Waves 2 - 2017

Acrylic on canvas / 48 x 36 inches
\$1,000



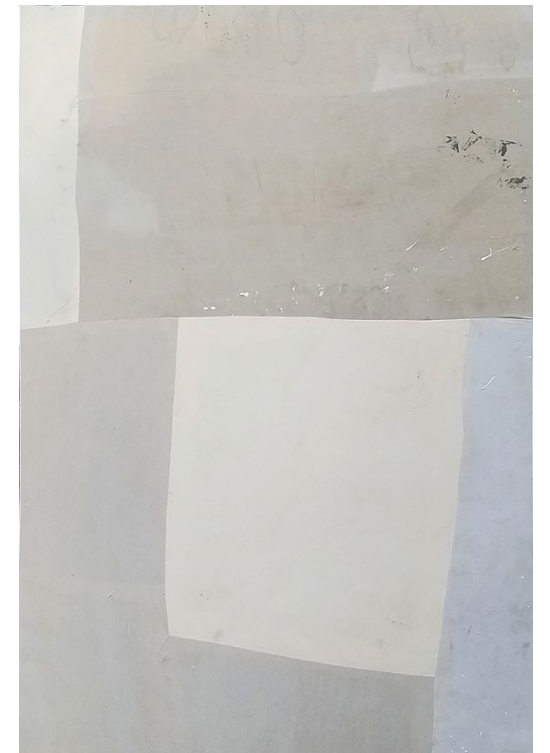
Deep Blue - 2017

Acrylic on canvas / 78 x 156 inches
\$5,000



Lasso - 2016

Mixed media on canvas / 87 x 138 inches
\$5,000



Scrapped - 2016

Raw canvas / 72 x 48 inches
\$2,000



Epoch - 2018
Acrylic and soft pastel on canvas / 73 x 57 inches
\$2,700



Temporary Dwelling - 2018
Acrylic and soft pastel on canvas / 73 x 57 inches
\$2,700



Untitled I - 2018
Oil and soft pastel on BKF / 10 x 8 inches
\$300



Untitled II - 2018
Oil and soft pastel on BKF / 10 x 8 inches
\$300



Untitled III - 2018
Oil and soft pastel on BKF / 10 x 8 inches
\$300

KATIE CURRY

www.katieleighcurry.com
SFAI

My work is a psychological, momentary marker in which I seek to give form to suppressed memory and unconscious thought where the process of painting mimics the process of memory. Initially a work is generated subconsciously where automatic, gestural marks lend themselves to a system of possible interpretations. Forms give way to recognizable imagery in the guise of cityscape and landscape, occasionally flirting with the figurative.



JIAMING SONG

www.jiamingsong.com
SFAI

WATER II - 2018

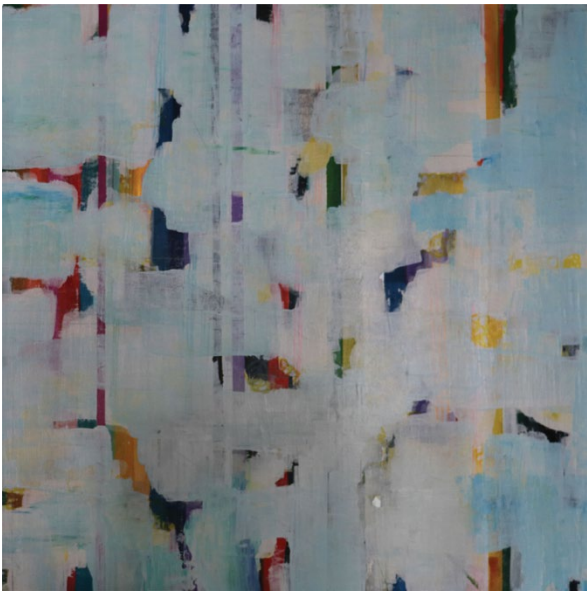
Oil on canvas with video projection / 30 x 40 inches
\$850 Artwork only
\$500 Add'l equipment option

This oil-based painting and projection, Water Two, explores the psychological experience of water and the passage of time. Using texture and motion together allows the viewer to immerse themselves in the felt experience of the piece.

JUDY HART

www.judybydesign.com
AAU

My artwork is a reflection of aerodynamics by which things are discovered through a plane window. These discoveries are childlike, graphics, vast landscapes, aerial perspectives of land, sea, and infrastructures from below the clouds. The negative and positive spaces in the clouds are meant to be windows into the unknown filled with the excitement of discovering what is underneath.



Blue Skies - 2017

Mixed media on wood / 24 x 24 inches
\$800



The Puzzle - 2017

Mixed media on wood / 24 x 24 inches
\$800

CHARMAINE KOH

www.charmainekoh.com

CCA

My paintings riff off tropes that act like shorthand for emotions and experiences—cartoony motifs and landscape idylls, slick gradients and scumbled expanses, bright colors and happy patterns. I abstract these references into imaginary worlds where not everything needs to make sense, leaving room for the seemingly incongruous to co-exist.



The Sun Behind My Eyes - 2017

Oil, wax, acrylic and graphite on wood panel
10 x 8 inches
\$600



Shiny Objects - 2017

Oil, flashe, and marker on canvas
72 x 60 inches
\$3,500



Cloud Down - 2017

Oil on canvas / 48 x 48 inches
\$2,000



Interleaved - 2016

Oil, ink, flashe, and graphite on canvas / 60 x 72 inches
\$3,500



Nightspace - 2016

Oil, ink, and flashe on canvas / 72 x 72 inches
\$4,200

EMILY BUDD

www.emilybuddsculptures.com
CCA



Pangaea is the super continent that once bound all the current continents into one. This liquefying mirrored version asks us to reflect in our own time the tectonic forces that unite us in the distant past. The fluorescent back glow reminds us that we are floating on a sea of fire, living on an Earth of constant change and transformation.

Pangaea - 2017

Mirrored acrylic and paint on plywood
76 x 48 x 1 inches
\$2,200



I am inspired by the application of a process and the passage of time as a means to transform. Using casting techniques to mimic the alchemical fossilization of objects over time, I speculate on lost and changing environments and altered material realities.

Stalagmites - 2017

Aluminum
74 x 30 x 24 inches
\$3,800



Beograd 2 - 2016

Silkscreen on paper
13 x 10 inches, framed
\$40



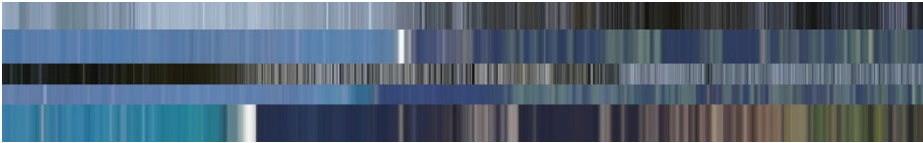
Tapestry No. 1 - 2017

Monotype on linen and yarn stretched on wooden frame
33 x 18 inches
\$500

BOJANA RANKOVIC

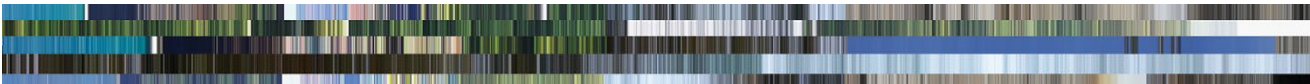
www.behance.net/bojanarankovic
CCA

Sentiments and bittersweet longing with all its positives and negatives. I reflect on relations with places I call home, and unobtrusively rebuild and ground my ideals through my pieces. I utilize distributive and accessible aspects of printmaking while not limiting myself by its traditional ideas of presentation.



Ocean Landscape - 2018

Digital photo print on aluminum / 7 x 48 inches
\$1,000



Water Landscape - 2018

Digital photo print on aluminum / 5 x 84 inches
\$1,500

HILARY BOND

www.hilarybond.com
SFAI

My internal experience of meditation, calmness, chaos, and separation from time is made external and visualized in my work. These works are inspired by my own daily experiences of using technology, hiking, and traveling, along with my research of meditation, Bay Area performance art, and American Conceptual art.

MARK ROBERTS

www.markrobertsfineart.com
AAU

Pastoral - 2017

Oil on canvas / 36 x 48 inches
\$8,000

The artist's ability to evoke beauty and to move a viewer emotionally, perhaps even to tears, has a spiritual element to it. It can be argued that an artist's function in society is similar to that of a priest. There is a quiet streak that runs through my work. I strive for a timeless, universal quality by combining formal beauty with enhanced mood that is designed to move the viewer towards quiet contemplation.



JUSUN SEO

www.kkwuns.com
SFAI

Universal Synapse - Past is done by human. Changes are made by human. Therefore, originality kept by human.

Duality - There is a light and shadow, happiness and sadness, or front and back. What if we see all aspects in one space?



Dream - 2018
Acrylic on canvas / 36 x 12 inches
\$400



Universal Synopsis - 2018
Acrylic on canvas / 40 x 40 inches
\$950



Duality - 2018
Acrylic on canvas / 40 x 30 inches
\$750



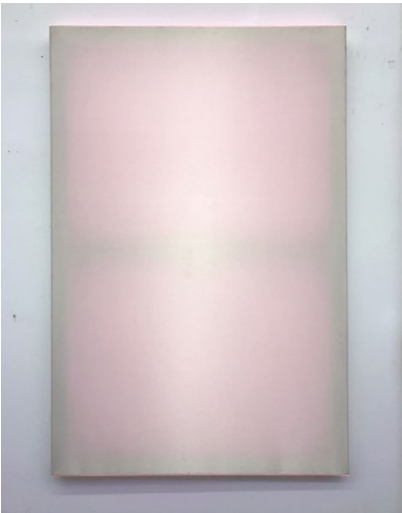
MIKA SPERLING
www.mikasperling.de
SFAI

Before You - 2018
Digital photograph / 35 x 25 inches, framed
\$800

I was born in the mining city Norilsk in Northern Siberia where my family lived for 20 years before migrating to Germany in 1991, when I was 7 months old. The work Before You describes a portrait of my young parents raising a family in an extreme place.



Pink Yeti - 2018
Pastel on fluff / 38 x 26 inches
\$1,200



Untitled (laser) - 2018
Mixed media / 36 x 24 inches
\$1,050



Untitled (Yves) - 2018
Mixed media / 41 x 34 inches
\$1,600

KATHERINE BOXALL

www.katherineboxall.com

SFAI

Although unfaithful to its tradition, I consider my works paintings. I am interested in the defining elements of the medium and how far these boundaries extend. In this series, I am focusing on the possibilities of canvas and the transformative qualities of a material in response to light and colour.

YUANYUAN (EUNICE) LIU

www.behance.net/Eunice92

SFAI

My work marries traditional and handmade mark-making with digital strategies using graphite and digital tablet. My inspirations come from my cross-cultural experiences, Chinese literature and mythology. Relying on historical context, huge cast of characters and psychological scope of ancient Chinese literature, I recompose the stories in my fantastical illustration.



Ji You Wu No. 5 - 2018

Digital painting on canvas / 24 x 36 inches
\$800



Nine Sons of the Dragon - 2018

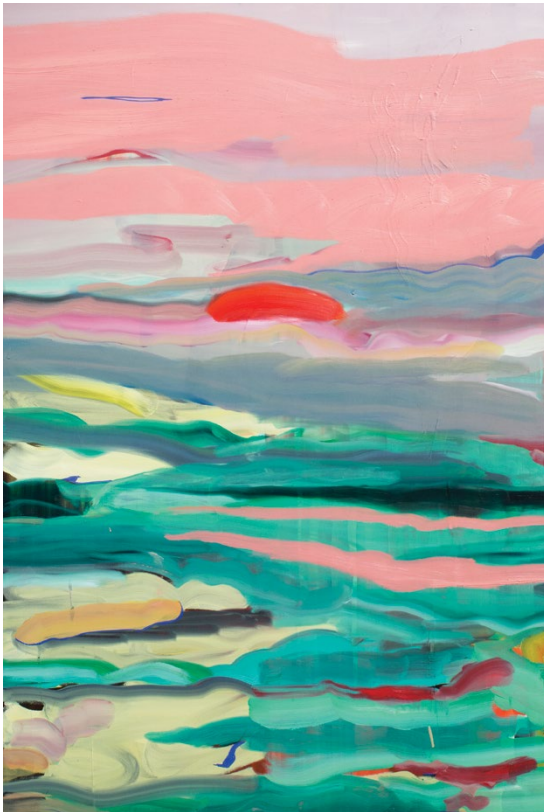
Digital painting on canvas / 24 x 120 inches
\$2,000

MELISSA CARTER

www.melissacarter.net

SFAI

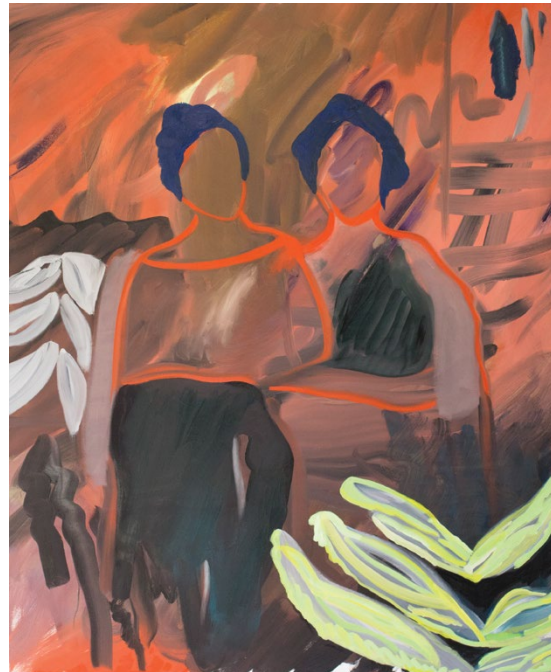
My paintings regard gender, female-identifying strength, and societal clichés. The large-scale pieces exercise power and freedom through the use of color and form, connecting elements of social oppression within modern history. Many of the final works have layers of separate paintings within them, each piece carrying a small history unto itself.



Even Bros Like Sunsets - 2018

Oil on canvas / 72 x 48 inches

\$2,200



Two Sisters - 2018

Oil on canvas / 64 x 48 inches

\$2,000



MISHAAL ATHEER

www.mishaalatheer.com

AAU

Heart Fishing - 2017

Bronze and steel / 68 x 24 x 27 inches

\$10,500

This bronze fisherman represents both my home city of San Francisco, as well as those of us who are searching for a connection in a sea of other people.

NI PAN

www.pennypn.com
SFAI

Great America #2 - 2017

Oil on canvas / 60 x 36 inches
\$3,500

Amusement parks are like fake cities isolated from the outside. We seem to be thrilled in that 'paradise' we make but it is still full of danger, tension, and uneasiness. I am interested in creating this strong emotion in my paintings which might cause a little vertigo when viewing.



DANIELLE MELEN

www.danimelen.wixsite.com/artist
SFAI

Blue Room - 2017

Oil on canvas / 54 x 72 inches
\$4,000

Through fragmented figures existing in a self-contained space, my work engages isolation, self-identity, and my own turbulent psychological state.

I explore the affair of making emotional connections with inanimate objects; through this I accept that my own body is my home. I use the images of home and body to articulate my constant state of displacement.



A C K N O W L E D G E M E N T S

Clyde & Co would like to thank the following people for their contributions to the Clyde & Co Art Award:

OUR JUDGES

Julie Armistead
Jennifer Kessler
Lex Calip

ART COMMITTEE

Aishlin Cook
Joan D'Ambrosio
Carmela Filamor
Rhonda Jenkins
Jessica Kelly
Chriszayda Lomiga
Patrick Postolka

PARTNER SCHOOLS

Academy of
Art University
California College
of the Arts
San Francisco
Art Institute

ART CONSULTANTS

Erica Schulz
- Erica Schulz Art
Consulting
Piero Spadaro
- Hang Art

T

A R O U N D T H E W O R L D

Since the launch of the Art Award in London (2010), it has been established across our international offices. Each office partners with its local art schools, supporting the next generation of visual artists across the globe.

We are proud to partner with the following art schools:

SAN FRANCISCO:

Academy of Art University, San Francisco
Art Institute and California College of Art

LONDON:

University of Arts London - Camberwell, Central
Saint Martins, Chelsea and Wimbledon Art Schools,
and City & Guilds of London Art School

DUBAI:

Dubai Community Theatre and Arts Centre

PERTH:

Curtin University, Edith Cowan University
and Central Institute of Technology

SYDNEY:

Sydney College of the Arts, National Art School
and University of New South Wales Art and Design

MELBOURNE:

La Trobe, RMIT and Melbourne University /
Victorian College of Arts



ART AWARD

THE
CLYDE & CO

ART AWARD
SUPPORTING THE NEXT GENERATION

© Clyde & Co LLP

www.artawards.clydeco.com